



Hosted by:  
**Richard Allen**  
**180 Marine**



**Don Wigston**  
**Windcraft Multihulls**

Also joining us tonight:

**Bruce Kuerten / Florida**

**Larry Shaw / Florida**

**Ross Stein / San Francisco**

**Larry Geller / Florida**

# Welcome!

## January 2017 Webinar

# The inside story on the new Corsair 760



January 2017 Webinar

# Tonight we will cover:

- **2017 Corsair Nationals - Sarasota, FL**
- **New Corsair 760 Launch**
- **2017 Corsair 970 Carbon News**



# **2017 U.S. Corsair Nationals**

## **January 27-29 / Sarasota, Florida**

**For more information:  
log on to [sail.corsairmarine.com](http://sail.corsairmarine.com)**

# 2017 Upcoming Events

<b>Atlanta Boat Show</b>	Jan 12 - 15
<b>Dusseldorf Boat Show</b>	Jan 21 - 29
<b>2017 Corsair Nationals</b>	Jan 27 - 29
<b>New England Boat Show</b>	Feb 11 - 19
<b>Miami Boat Show</b>	Feb 16 - 20

For up-to-date news, events and clinics  
visit the Corsair Community: [sail.corsairmarine.com](http://sail.corsairmarine.com)

January 2017 Webinar  
but before we do...



# What fits your sailing style best? A tale of the tape...

	Corsair 760	Farrier F-22	Dragonfly 25
Length overall	24' 3"	22' 11"	25'
Waterline	23' 7"	22' 3"	-
Beam overall	17' 11"	18' 1"	19'
Beam folded	8' 2"	8' 2.5"	7.5'
Bare weight lbs	1,981	1,300 - 1,500	2,535
Draft board up	1'	1'	1' 2"
Draft board down	5' 3"	4' 11"	4' 11"
Mast Length	34' 7"	31' 5" / 35' 4"	34' 5" / 38' 8"
Mainsail Area	268 sf		258 sf
Jib Area	143 sf	389 (main/jib)	108
Screecher	262	262	269
Spinnaker	620	611	484 / 645
SA/D			
Righting Moment			

# 760 Design Team

Perus Yacht Designs have been brought back to the team after an extremely successful design program on the Pulse 600 project, and they are working in collaboration with Romain Scolari and Jonas Hertwig on engineering and interior design.

## Design team



François Pérus

naval engineer and architect  
sailor  
leisure yachts with emphasis on  
multihull design  
engineering studies



Romain Scolari

naval engineer and architect  
sailor  
leisure yachts & floating  
architecture  
engineering studies



Jonas Hertwig

product, interior and marine  
designer  
sailor

Ippolito Fleitz Architects

## The Corsair 760...what's different than? And what is the same?

*The most recent images of the 760 from the factory before leaving for Dusseldorf. This one has custom graphics.*





**Increased performance: 15% increase in righting moment and a 2.5 degree lower heel at comparable wind speeds, contributing to making this boat faster and easier to handle.**



**Like all Corsair trimarans, the 760 is built to withstand the toughest conditions.**

**PERFORMANCE / SUPERIOR SAFETY / STYLE**



## DASH 750 MK II compared to the new 760

**The beams are significantly larger than the previous Dash, primarily to take the additional loads of the added buoyancy and righting moments. These beam profiles offer less windage and better water deflection.**



**BUILT TO WITHSTAND THE TOUGHEST CONDITIONS**

## DASH 750 MK II compared to the new 760

**760 Rudder – the 760 has adopted the performance pack rudder from the Sprint 750 MKII. This high-aspect carbon rudder and rudder case were used on “Bullet.”**

**Benefits: lighter weight, less drag, better efficiency.**



**Superior Safety**

**Colligo Chainplate Distributor with Dyneema Lashing Line**



## INTERIOR CORSAIR 760

**The quality of finish is first class, no different than what you would expect to see in a Seawind 1190. Full gelcoat headliner in a matte finish – making this boat brighter, more spacious feeling, but softer in its cabin atmosphere, while also being easier to maintain.**



## INTERIOR CORSAIR 760

**High quality lighting. Easy to clean headliner surfaces make for a very bright, roomy and open cabin. This is also supported by the new skylight and larger cabin side window profile.**



# Large Storage Compartments

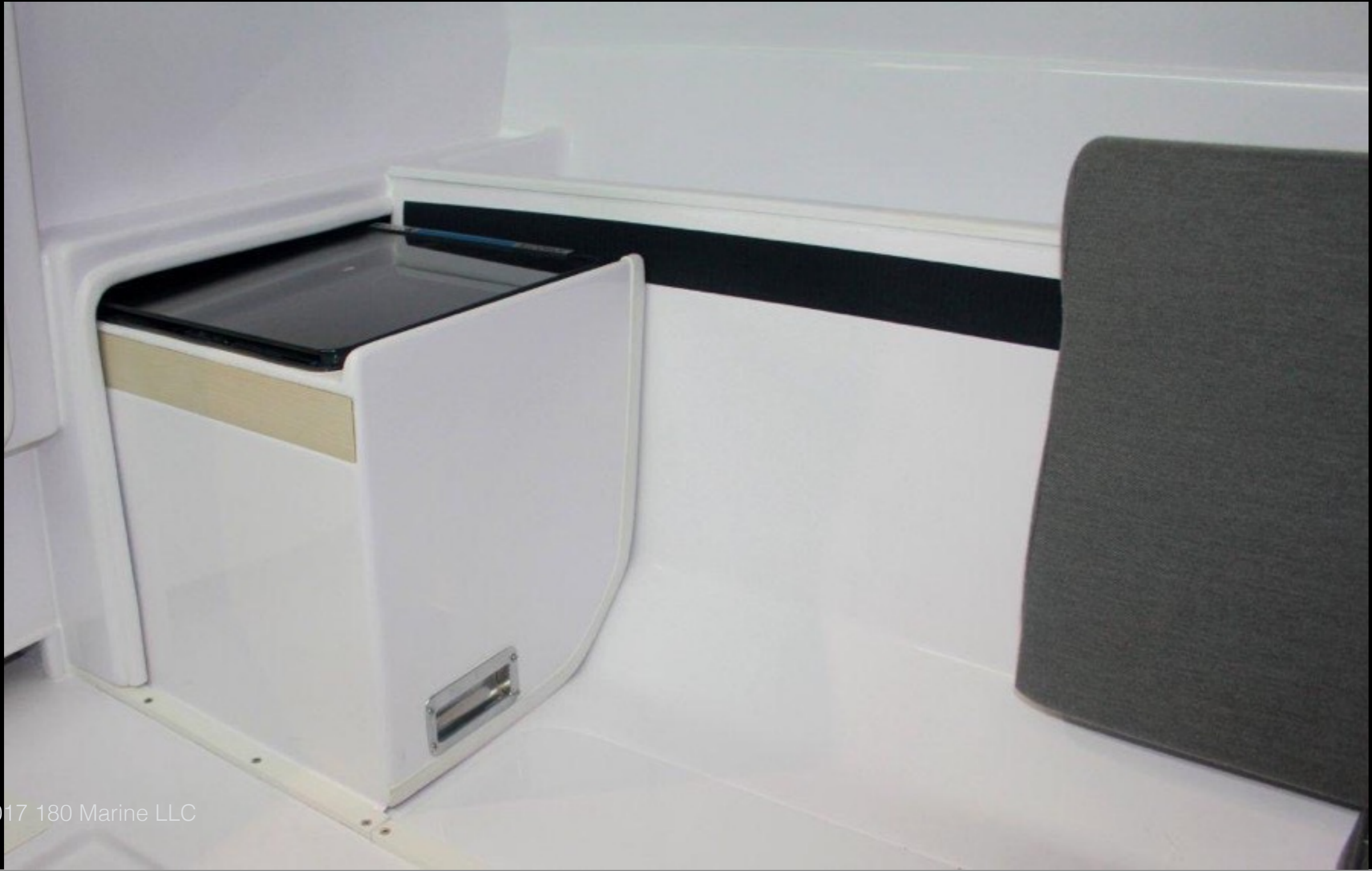




# Sliding Interior Galley



# Put it away for day sailing and racing



## **New 760 Sport**

**“OPTIONED UP” with all the bits you would want on a high performance cruiser.**

**Full sail package, carbon sprit, carbon mast, and more...**

### **LATEST NEWS:**

***(this is still being officially confirmed, however 90% likely at this stage)***

**Corsair is working with Southern Spars on the carbon rig design. At this planning stage, the Sport carbon rig will be 1000mm (3.2 feet) taller than the alloy version, with a bigger sail plan. This will not only be a better all around racer, but also a better cruiser for anyone sailing in light wind areas.**

**Corsair's resale value is legendary and will be one of the safest investments you can make today.**



# 2017 - 970 Design Team

Perus Yacht Designs have been brought back to the team after an extremely successful design program on the Pulse 600 project, and they are working in collaboration with Romain Scolari and Jonas Hertwig on engineering and interior design.

## Design team



**François Pérus**  
naval engineer and architect  
sailor  
leisure yachts with emphasis on  
multihull design  
engineering studies



**Romain Scolari**  
naval engineer and architect  
sailor  
leisure yachts & floating  
architecture  
engineering studies



**Jonas Hertwig**  
product, interior and marine  
designer  
sailor  
  
Ippolito **Fleitz** Architects

CORSAIR CRUZE 970

**Only one slot left available  
for Summer (June/July  
completion)**



**The tall rig/aft traveler version is extremely popular on the East coast.**



**The 970 Carbon is looking dramatically lighter, every part being noticeably lighter.**

**The big win however is the additional stiffness.**

**Carbon rig will be much easier to raise and manage single handed**



CORSAIR Cruze 970 /  
970 Carbon

**The 970 Carbon will feature full Cruze interior comforts and finish**



CORSAIR Cruze 970 /  
970 Carbon

Before

After



CORSAIR Cruze 970 /  
970 Carbon

**The Carbon will  
feature full Cruze  
interior comforts  
and finish**



**The Carbon will feature full Cruze interior comforts and finish**



## The Carbon will feature full Cruze interior comforts and finish



CORSAIR Cruze 970 /  
970 Carbon

**The Carbon will feature  
full Cruze interior  
comforts and finish**



**Like the 760, full navigation options are now available.**



CORSAIR Cruze 970 /  
970 Carbon

**The Carbon will feature full Cruze interior comforts and finish**





# **2017 U.S. Corsair Nationals** January 27-29 / Sarasota, Florida

Look out for Tom Rees on his SPORT 970 at the Key West Race Week and Corsair Nationals!



**For more information:  
log on to [sail.corsairmarine.com](http://sail.corsairmarine.com)**

**Thank you for your time tonight!**

**Contact information:**

**Richard Allen / [info@180marine.com](mailto:info@180marine.com)**

**Don Wigston / [info@windcraft.net](mailto:info@windcraft.net)**

